

KARACADAG
DEVELOPMENT
AGENCY





DIYARBAKIR - **CAYONU** The first world trade center.

SANLIURFA - **GOBEKLITEPE** The oldest temple





Tigris and Euphrates; mankind created first temples, first cities, first writing, first harvest between these two ancient rivers.

Name of Mesopotamia (land between the rivers) and Fertile Crescent has given to this magnificent starting point of civilizations where Diyarbakir and Sanliurfa are settled.

Although there is no precise information about when the cities of Diyarbakir and Sanliurfa were established, many civilizations came into life on them and it is emphasized that they were intermingled with each other at different times.

It has been proven that history of the region dates back to 10 thousand years, to Neolithic Ages.

With the commencement of writing through 3200s B.C. civilizations began to rise in Mesopotamia.

Starting with Hurrians and Mitanni from 3000 B.C. to Ottomans and Modern Turkey, each civilization that ruled Diyarbakir and Sanliurfa immortalized these cities by leaving marks of their ages.

To the period of The Romans, Diyarbakir and Sanliurfa were ruled by the following civilizations:

B. C. 3000 - 1260 Hurrians and Mitanni,

B. C. 1260 - 653 Assyrian and Urartu,
 B. C. 653 - 625 Scythians,
 B. C. 625 - 550 Medes,
 B. C. 550 - 331 Persians,
 B. C. 331 - 323 Macedonians (Alexander The Great),

B. C. 323 - 140 Seleucids,
 B. C. 140 - 85 Parthia,
 B. C. 85 - 69 Kingdom of Armenia - Tigran,
 B. C. 69, Romans became dominant in the region and struggle with Sassanids started.

395 Byzantine became dominant in the region and struggle with Iranians started.

639 Islamic Domination; the ongoing effect of Grecian culture since BC IV. century ended and a new era begun.

15 September 1515 Ottoman Empire took control of the region from Safavids.

29 October 1923 the Republic of Turkey era has begun.

For more information
www.seanatolianheritage.org



DEVELOPMENT AGENCIES IN TURKEY

Development Agencies have been established under the coordination of State Planning Organization and on the basis of statistical regions (NUTS II) by the Cabinet Decision.

Development Agencies have a legal personality, their transactions are regulated by law No. 5449 and by special regulations when relevant. They are designed to be socio - economic development - oriented and its functions are to be supportive including facilitating and coordinating the development activities of the local stakeholders.

KARACADAG DEVELOPMENT AGENCY

Karacadağ Development Agency has been established in Diyarbakir to serve both Diyarbakir and Sanliurfa provinces by cabinet decision dated 10 November 2008.

Tasks of Karacadağ Development Agency are as follows;

- To prepare strategies related to regional development,
- To improve economic and social indicators at the national, regional and local level,
- To reduce inter-regional and intra - regional disparities,
- To support the development and implementation of projects,
- To mobilize the region's entrepreneurial potential.

TRC2 Region (Sanliurfa-Diyarbakir)

	Sanliurfa	Diyarbakir
Number of Districts	11	17
Number of Municipalities	26	30

	SANLIURFA	DIYARBAKIR	TRC2 REGION	TURKEY
TOTAL POPULATION (2010)	1.663.371	1.528.958	3.192.329	73.722.988



KARACADAG DEVELOPMENT AGENCY



VISION

Diyarbakir – Sanliurfa Region; realizing its tourism potential by protecting its natural and cultural heritage, raising its quality of life through converting its resources into production and employment, growing trade center of the Middle East.

MISSION

To mobilize the entrepreneurship and the local potential of the region in accordance with the principles and policies prescribed in national development plans and programs, to accelerate regional development through mobilize, promote and develop the local dynamics, features, resources and facilities, to improve cooperation among government, private sector and non – governmental organizations in the region to reduce intra - regional and inter - regional development disparities and thus ensure sustainability of the national / regional development program.

BOARD OF DIRECTORS

Board of Directors is the decision-making body. The Agency's legal representative is the Chairman of the Board of Directors. It is composed of Governors, Mayors, Presidents of the Chambers of Commerce and Trade and Presidents of the Provincial General Assembly in both Diyarbakir and Sanliurfa.

DEVELOPMENT COMMITTEE

Development Committee is the advisory body for the Agency and composed in such a way to improve coordination and cooperation among public institutions, private sector, non - governmental organizations, universities and local administrations.

SECRETARIAT GENERAL

Secretariat General consists of legal consultant, internal auditor, head of units, coordinators, specialists, and support staff. Secretariat General acts as the executive body and reports to the Board of Directors.

Legal Consultant

Represents the agency in cases related to the Agency. Examines directives, contracts and protocols issued by Agency.

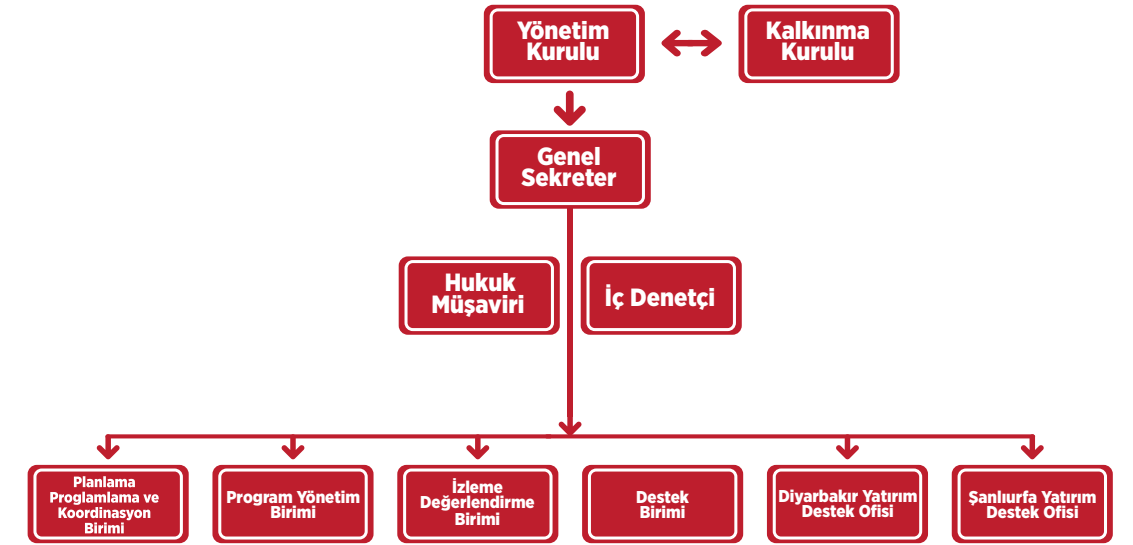
Internal Auditor

Reviews and analyzes to make productive use of resources and provides smooth functioning of the internal control system.

HUMAN RESOURCES



ORGANIZATION CHART



After a highly competitive recruitment process, **32 specialists and 4 support staff** are employed.

Areas of Expertise

Electrical and Electronics Engineering	Law
Environmental Engineering	Finance
City and Regional Planning	Statistics
Agriculture Engineering	Sociology
Computer Engineering	Economics
Geological Engineering	Journalism
Surveying Engineering	Political Science
Industrial Engineering	Public Administration
Textile Engineering	International Relations
Civil Engineering	Business Administration



THE UNITS OF AGENCY



Planning, Programming and Coordination Unit (PPCU)

PPCU is responsible for doing research to accelerate region's economic, social and cultural development and its competitiveness. It brings local authorities together to draw up plans and programmes on regional and sectoral basis.

Program Management Unit (PMU)

PMU is responsible for managing grant programmes are set out in line with regional plans and programmes defined by PPCU.

Support Unit

This unit consists of Administrative Assistant, Press and Public Relations, Human Resources, Accounting and IT department.

Monitoring and Evaluation Unit (MEU)

MEU tracks on a regular basis projects supported by the Agency to ensure grants are used efficiently, effectively and in a sustainable manner.

Investment Support Office (ISO)

ISO acts as one stop - shop on behalf of private companies for licencing, authorization and all other administrative permissions due time in accordance with to the relevant legislation and monitors the investments in the region. ISO acknowledges the investors and guides them in line with the application rules and relevant documentations set in legislations.



Preliminary Regional Development Plan

Preliminary Regional Development Plan is a participatory and feasible plan that establishes the strategies and priorities oriented for motivating and mobilizing local dynamics and potentials.

The underlying aim of the Preliminary Regional Development Plan is to facilitate the economic and social development in our Region, to determine the general tendencies and to ensure the specialization in existing and rising sectors in which our Region has comparative advantage.

2011 – 2013 Regional Plan

Primarily, Regional Plan Process Planning has been prepared, and division of work has been performed accordingly.

Current situation in each sector has been researched and analyzed by specialists.

Vision of the Region has been determined in a participatory manner.

17 Sector Analysis workshops have been organized in 2 provinces.

Development Axis 1-

Increasing employment and competitiveness

▶ **Objective 1-** Supporting sectors which have comparative advantage

▶ **Objective 2 -** Increasing employment through sectoral development

▶ **Objective 3 -** Developing entrepreneurship and supporting SMEs

▶ **Objective 4 -** Improvement of business and investment environment

Development Axis 2 -

Enhancement of social capital

▶ **Objective 1-** Achieving harmony between education and regions development

▶ **Objective 2 -** Improving institutional capacity

▶ **Objective 3 -** Improvement of efficiency and accessibility of social services

Development Axis 3-

Development of regions spatial organization, improvement of living standards

▶ **Objective 1-** Effective usage of locational and human capital potentials of sub-regions

▶ **Objective 2 -** Improvement of regional transportation and infrastructure

▶ **Objective 3 -** Improvement of quality of living standards at urban and rural areas

Development Axis 4-

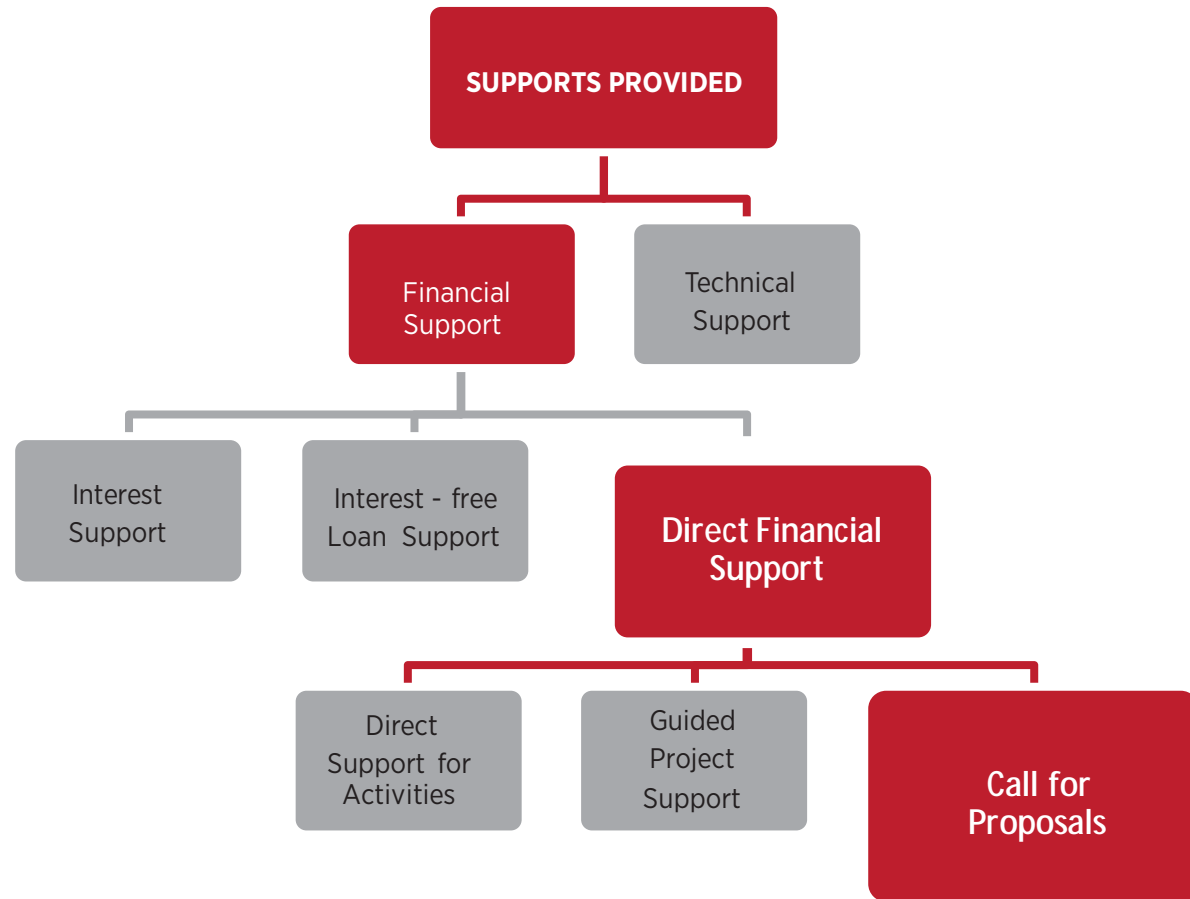
Sustainability of natural resources and cultural heritage

▶ **Objective 1-** Sustainable usage of water and land

▶ **Objective 2 -** Improving quality of environment and dissemination of renewable energy usage

▶ **Objective 3 -** Protection and improvement of cultural heritage

FINANCIAL SUPPORT MECHANISM



FINANCIAL SUPPORT

Agency supports the following projects and operations of the local administrations, universities, other governmental institutions, civil society organizations, business companies, cooperatives and unions according to methods and principals in projects and Operations Support Regulations.

The projects and operations which:

- Contributes to the regional plan and programs
- Promotes cooperation and partnership among government, local administration, private sector and civil society organizations
- Promotes and improves the business and investment opportunities in the region
- Directly or indirectly supports SMEs
- Increases the institutional capacity of the organizations in the region.

Categories of Financial Supports

1- Direct financial support: Consists of financial supports provided through call for proposals or direct support for activities and guided project supports without call for proposals.

1.1- Call for Proposals: Is an invitation to submit projects proposals in the context of a particular financial support programme.

1.2- Direct Support for Activities: Agency may provide direct support for activities in order to accelerate the process of project support without call for proposals.

1.3- Guided Project Support: The essential element that differentiates guided project support from other financial support methods is that it is developed and launched under the leadership of the agency.

2- Interest Support: In this support method, interest expense of the loans from related intermediary organizations is met by the Agency.

3- Interest-free Loan Support: Interest-free loans will be provided through intermediary organizations and will be paid back in installments without any interest.



Based on socio-economic development objectives and priorities for the Region, Karacadag Development Agency announced 2 grant programs through call for proposal in 2010.

Grant Programme	Grant (\$)	Co-Finance (\$)	Total (\$)
Economic Development	7.948.150	8.626.320	16.574.470
Tourism Infrastructure	6.933.333	4.407.040	11.340.373
Total	14.881.483	13.033.360	27.914.843

Informatory meetings

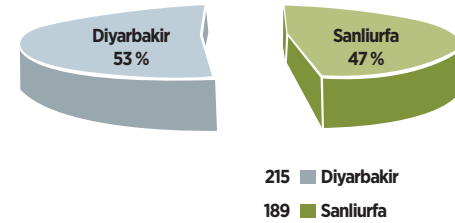
- Organized in 26 counties,
- 1.344 people in Diyarbakir,
- 947 people in Sanliurfa participated.

Trainings on Project Cycle Management

- 10 sessions in total: 5 sessions for each province,
- 396 people in Diyarbakir,
- 296 people in Sanliurfa participated.

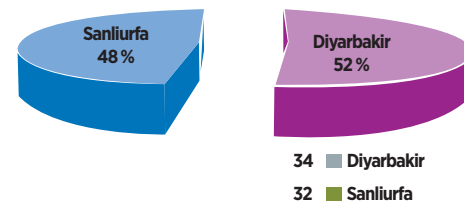
APPLICATION OF THE REGION Economic Development Grant Program

Out of 404 projects 58 projects have been supported.



Tourism Infrastructure Grant Program

Out of 66 projects 23 projects have been supported.



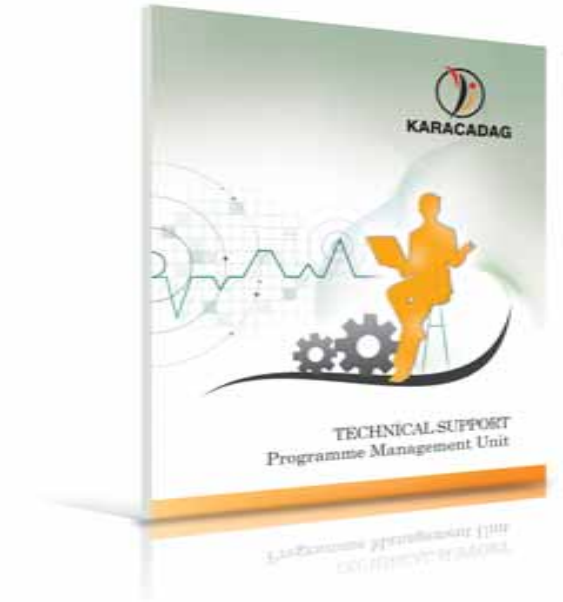
DIRECT SUPPORT FOR ACTIVITIES

This programme aims to support particularly research and development and planning activities within the region.

Total Budget for the programme: 775.331 \$

Minimum Grant	12.000 (\$)
Maximum Grant	46.667 (\$)

Total Applications	61
Projects Supported	28



TECHNICAL SUPPORT

Total Budget for the programme: 300.748\$

Minimum Grant	-
Maximum Grant	10.000 (\$)

Total Applications	43
Projects Supported	35